

UWE Copper Radiator

- for the most pleasant passenger climate

SUMMARY

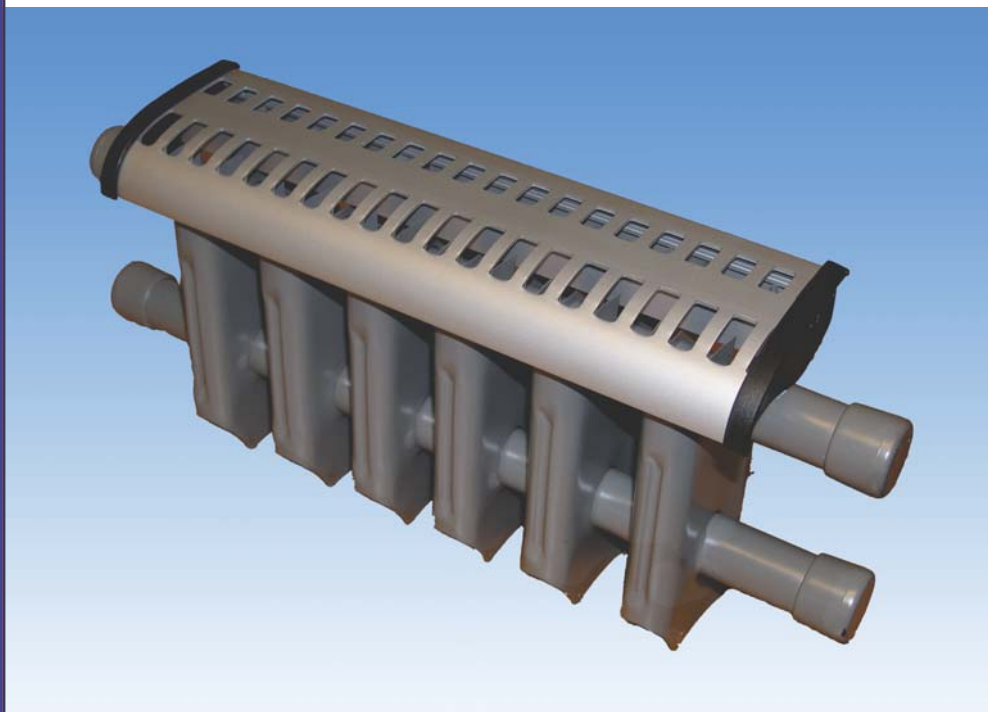
- Suitable for heating in buses, coaches, marine etc.
- Designed for vehicles with waterborne heating systems

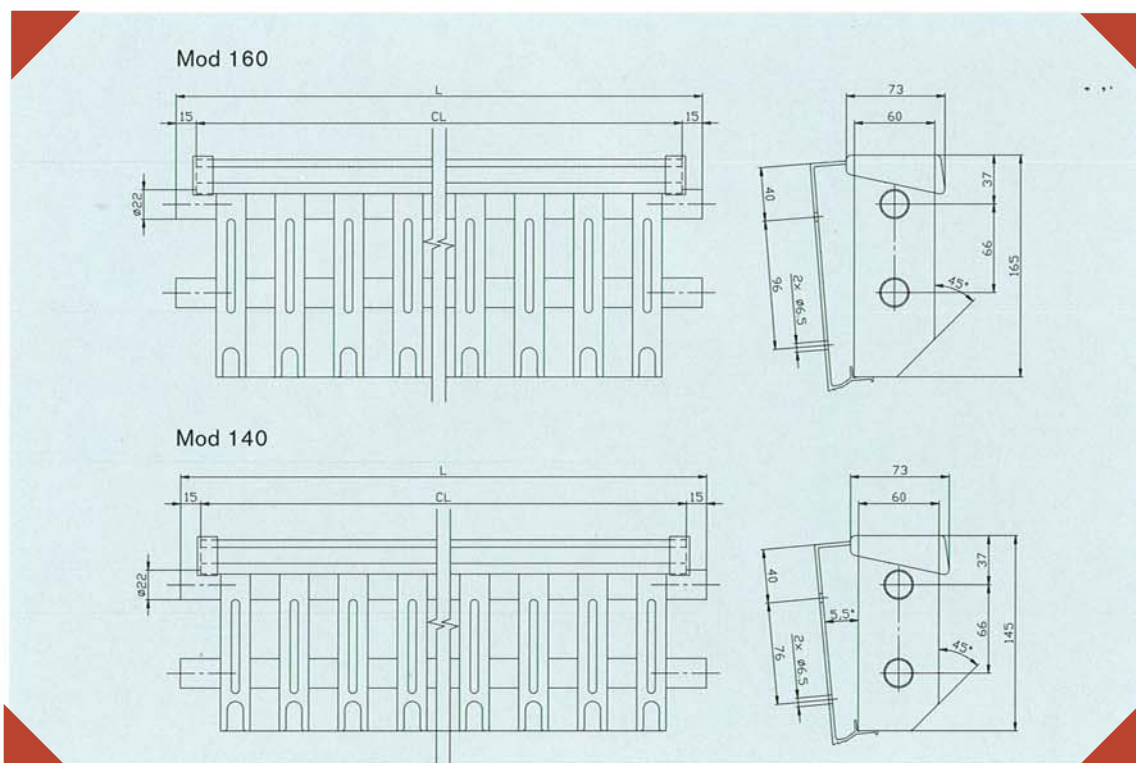
FEATURES

- Noiseless and draught-free heating
- Maintenance-free
- Twin pipe for optimized heat output
- Classic design

UWE Radiator offers very pleasant passenger climate with a touch of retro design. The perfect application for radiators are coaches and intercity buses.

High quality copper radiators from UWE produce very pleasant radiated heat because of their large radiating surface and its material properties. Even at low water temperatures they offer excellent heat output. The design is classic, giving excellent reliability and low maintenance costs. Installation is simple, thanks to specially designed bracket, and internal cleaning is facilitated by the rolled bottom edge of the radiator. The top is covered by a section made from anodised aluminium, with pattern holes that maximises convection. The technique of soldering copper fins onto copper ensures excellent heat transfer throughout the life of the radiator.





Dimensions in mm

Technical Data

Output, model 160	520 W
Output, model 140	495 W
Piping	Copper Ø 22 mm
Weight, model 160	2.8 kg/m
Weight, model 140	2.5 kg/m
Liquid capacity	0.68 l/m
Height, model 160 (installed in vehicle)	171 mm
Height, model 140 (installed in vehicle)	151 mm
Depth, model 160 (installed in vehicle)	97 mm
Depth, model 140 (installed in vehicle)	95 mm
Standard length	5,000 mm
Special lengths	< 5,000 mm
Colour	Grey
Cover section	Anodised aluminium
Accessories	Brackets, end covers in plastic, pipe connections