

# UWEPEX piping system

- easy, economical, reliable and revolutionary

## SUMMARY

- Pipe system using state-of-the-art plastics
- Designed for minibuses, buses and coaches with waterborne heating systems

## FEATURES

- Saving ~20% cost compared to traditional pipe systems
- Appr. 50% installation time compared with traditional pipe systems
- Low weight (~30% of copper)
- Flexible pipes (easy to bend)
- Non-corrosive
- Good isolation capacity

**T**he UWEPEX Piping system revolutionizes installation of pipes for waterborne heating in buses. Quick and easy to connect, flexible pipes, lower price and reduced weight compared to a traditional piping. UWEPEX is a proven system for water transport in buses for more than a decade. So let us introduce the modern way for water transport in large vehicles to you!



# UWEPEX piping system - the modern way for water transport

## Quick and easy mounting

1. Thread the support ring over the PEX pipe
2. Expand the PEX pipe by means of the hydraulic expanding tool
3. Insert the coupling. The UWEPEX pipe will shrink in a few seconds and make a tight, safe coupling. After another hour the PEX pipe is ready for pressure test!

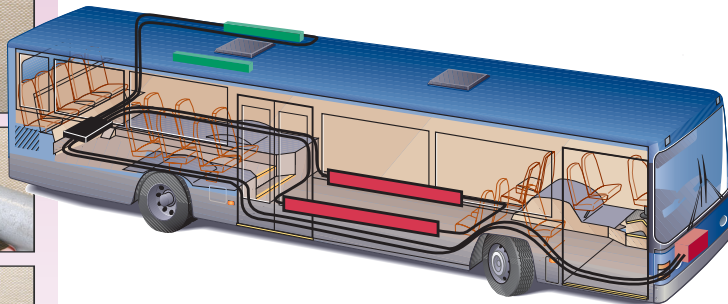
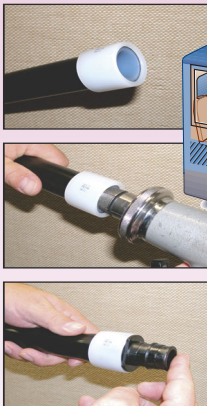
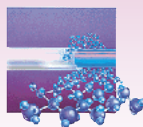


Figure: Example how PEX pipes can be installed in a typical city bus. UWEPEX is used from the distribution centre to the defroster, roof unit and convectors. Note that you can bend the UWEPEX pipes which means that you can eliminate a large number of couplings and elbows. UWEPEX can of course be used in all sizes and types of vehicles, where you need to transport water.

## About the material

The UWEPEX is made of PEX plastics, which stands for crosslinked (X) polyethylene (PE). In short, it is produced in a manufacturing process where long polyethylene chains are crosslinked with peroxide, improving the high temperature properties of the material and provides high cracking resistance and long-time creep strength.



## Advantages

The most important difference when using PEX instead of traditional piping, is that the **installation time decreases to approximately 50%.**

How is that possible? There are two main reasons: The first is that the pipes are flexible and easy to install without a large number of elbows and couplings. The second is the extremely short time it takes to make a coupling. But these are not the only advantages, here are some more:

- approximately 20% lower overall cost, due to less labor cost
- low weight, you can save from 40-80 kg in a 12 m bus
- simple mounting tools, no welding/brazing in bus
- flexible pipes
- good isolation, no extra isolation needed inside the bus
- non-corrosive material
- low flow resistance

## Economy aspect

In the end, it's the overall cost that counts. Just take a look at the production cost and compare it. Furthermore the PEX price is not fluctuating like the copper prices do...

# UWEPEX is not only pipes...

## ...UWE PEX is a new way of thinking

When you think PEX, you have to think like installing cables. UWE Verken has a long experience with the PEX pipes and we will support you all the way, these are the steps when changing to PEX:

- prestudy
- prototype installation
- evaluation
- training of installation staff (1-2 days)
- installation instructions
- support and after sales



## Standard UWEPEX range (see product sheet for more information)

Available dimensions	Ø 16, 20, 25, 32, 40 mm
Standard lengths	5, 6 and 50 m
Connection variants	Straight, elbow, T-pipe

## Customized UWEPEX

It is also possible to order UWEPEX with ready bends and couplings. According to a drawing UWE will bend and insert couplings.



*Figure: Customized UWEPEX*

Adv018E01en

UWE Verken AB, Box 262, S-601 04 Norrköping, Sweden  
Tel +46 11 248800, Fax +46 11 124704  
[www.uwe.se](http://www.uwe.se), email: [info@uwe.se](mailto:info@uwe.se)  
Member of MCC Group - Certified ISO 9001

Specifications subject to change without notice. UWE and MCC are registered trademarks.

