



# Product Information

## Heating fan Whisper 3C

PRD0226E03en

### Description

UWE Whisper 3C is a heating fan intended for heating systems for buses. The heating fan, which is of a very compact design, consists of a heating core with 22 mm connection and an axial fan for 24 VDC voltage. All is housed in a aluminium box.

In one simple operation, the heating core can be turned from left to right side and vice versa. You simply unscrew the side plate, removing the heating core, turning it and mounting it back again.



Figure: Whisper 3C

### Technical data

Air flow	65 m <sup>3</sup> /h
Heating power	1,7 kW (Q80) 2,1 kW (Q100)
Voltage	24VDC

### Connections

#### Electrical connection

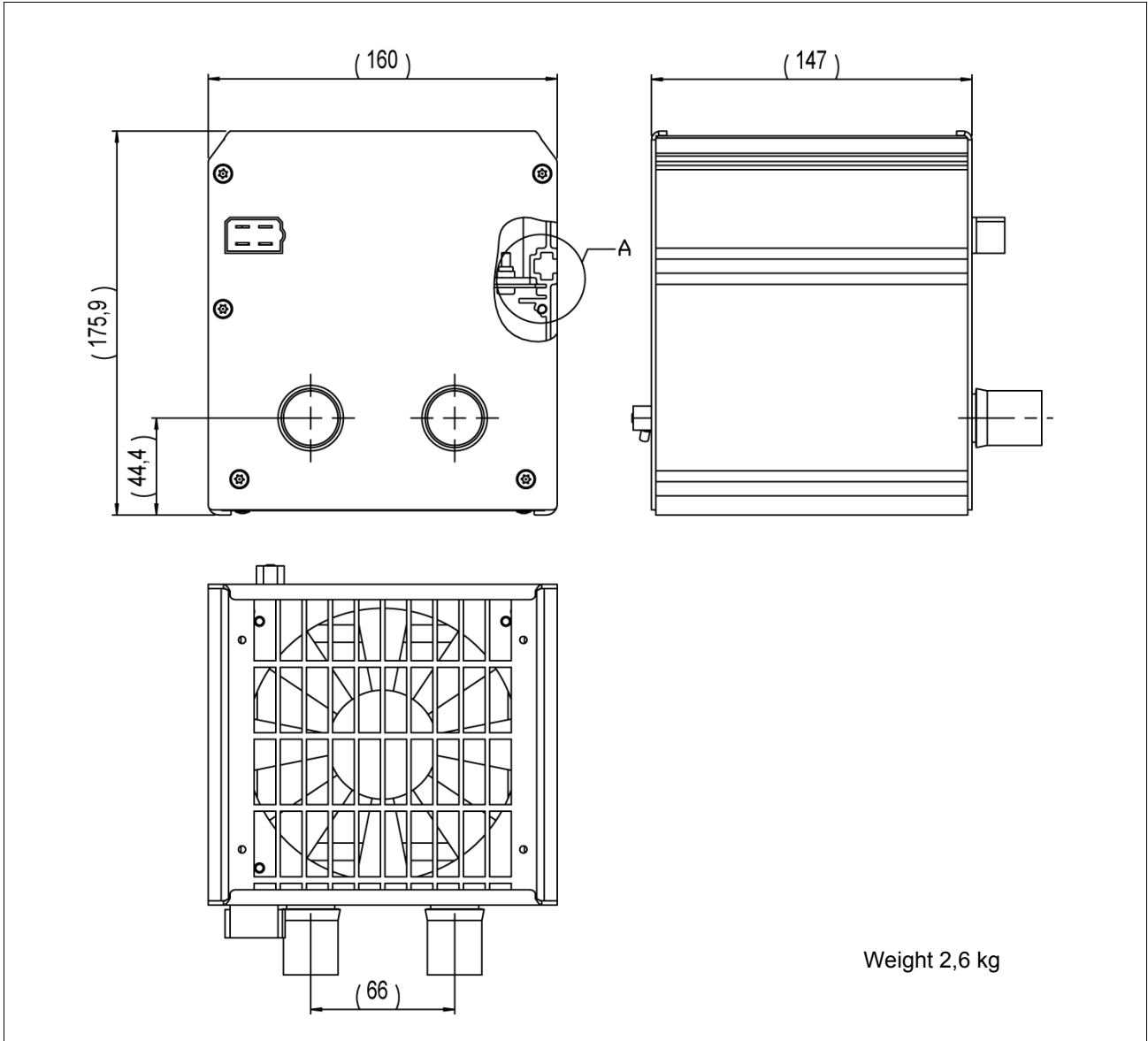
To connect to the bus' electrical system, use the following connectors::

Contact, fan side (male)	Part
Contact housing	AMP 1-180901-0
Pins for contact housing	AMP42241-2

#### Water connections

To connect to the water system use the 22 mm connections.

Dimensions (mm) and weight



Product range

Description	Part No.
Whisper 3C 22 mm 24VDC	15471

UWE Verken AB  
Box 262  
S-601 04 Norrköping, Sweden  
Phone +46 11 24 88 00  
Fax +46 11 12 47 04  
[www.uwe.se](http://www.uwe.se)

