

UWE Manual Operated Valve

- basic and easy wire control

SUMMARY

- Manual operated two- or three way valve for basic climate control

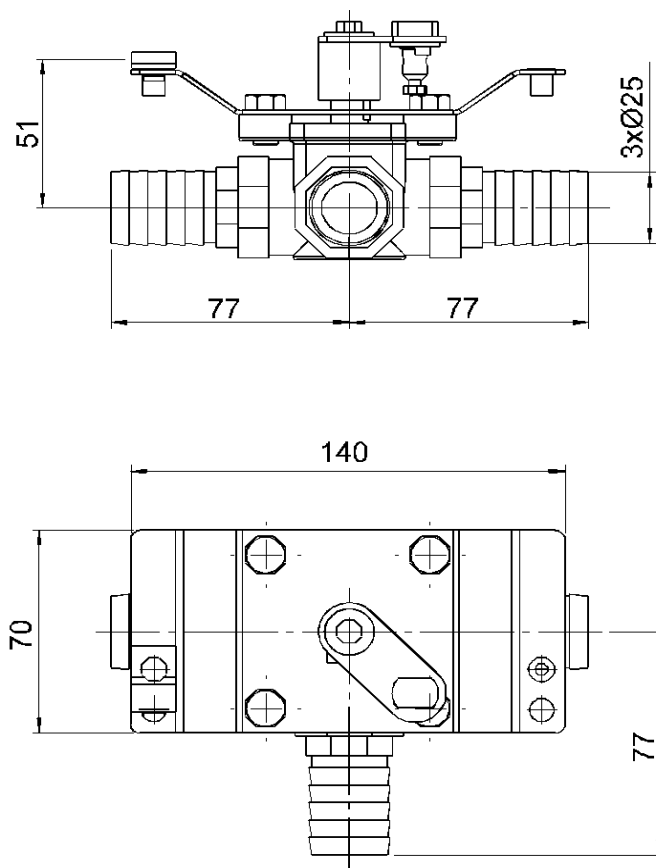
FEATURES

- Robust and simple
- Possible to choose hose connection
Ø 22, 25, 28mm
- Low flow resistance

The UWE Manual Operated valve is used for manual control of the flow rate through one or more heat exchangers.

The UWE Manual Operated valve is used for manual wire control of the flow rate through one or more heat exchangers, primarily for heat control of defroster and overhead heating units in buses and coaches. The assembly consists of a valve, which is either 2-way or 3-way (shunt), and a wire to enable transmission from the operating unit to the valve.





Dimensions in mm

Technical Data

Max operating pressure	10 bar
Max temperature	110°
Max differential pressure	200 kPa
Torque, maximum	3 Nm
Stroke	40 mm

Adv015E01en

UWE Verken AB, Box 262, S-601 04 Norrköping, Sweden
 Tel +46 11 248800, Fax +46 11 124704
www.uwe.se, email: info@uwe.se
 Member of MCC Group - Certified ISO 9001



Specifications subject to change without notice. UWE and MCC are registered trademarks.